

# CUBBY'S CORNER

MAPLE AVENUE ELEMENTARY SCHOOL  
WEEKLY NEWSLETTER  
THURSDAY, APRIL 18, 2024

SUZANNE PYSZKA, PRINCIPAL



LISA JOHNSON, ASSISTANT PRINCIPAL

JILL RIOUX, DEAN OF STUDENTS

## SHOW CHORUS

On Wednesday, April 17 the 4th grade show chorus performed their show, "The Musical World of Walt Disney." Thank you to Ms. Pruneau and Mr. Landano for all their hard work with this talented group of students!

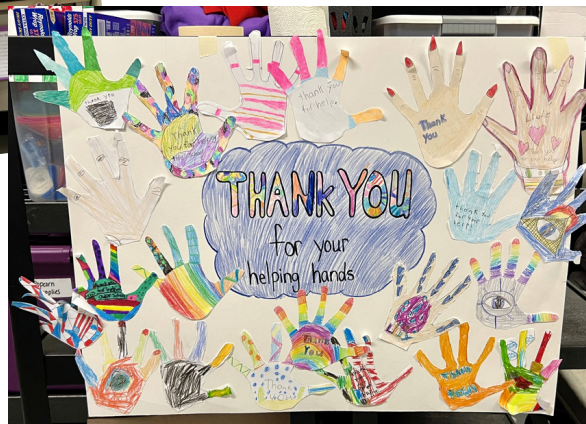


### IN THIS ISSUE

- SHOW CHORUS
- VOLUNTEERS
- WALL OF HEROES
- PFT NEWS
- SAVE THE DATE
- LITTLE MISS LUAU

## WE LOVE OUR VOLUNTEERS!

To honor our wonderful volunteers, members of our Sunshine Committee decorated the PFT office with cards and posters made by students. Our volunteers are instrumental in helping to create a positive school environment. Thank you so much for everything you do!



## WALL OF HEROES



Each spring we honor those who have served or are currently serving in the military by creating a “Wall of Heroes”. We are inviting families to submit photos of family members who are currently serving or have served in the armed forces. If you are interested in having your family hero displayed, please complete the attached form and submit via email to [lauren.pruneau@sau19.org](mailto:lauren.pruneau@sau19.org) no later than May 7th.

## PFT NEWS



**Donating Solar Eclipse Glasses:** We hope your students enjoyed their glasses! Please consider donating your gently used Solar Eclipse glasses. Goffstown Library is collecting glasses to be sent to South America for eclipse-viewing in October. There is a collection bin at the Goffstown Library and at Maple Avenue near the Kindness Tree in the gym foyer. ***Please send your donated glasses in by April 30th.***

**Family Night at Chucky Cheese!** Friday, April 19. Mention Maple Avenue when you check in and 20% of the proceeds will come back to the PFT! See the attached flyer for coupons!

**Boys Night Out** will be Friday, May 10 at the Fisher Cats! Register for tickets at: <https://fevo-enterprise.com/event/maple-ave-2>

**Spring Spirit Wear:** The Spring Store is open through April 21st. <https://www.browngraphics.com/maple-ave-spring-spiritwear-.html> Thank you to Brown Graphics for the support!

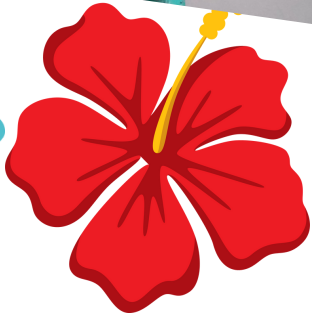
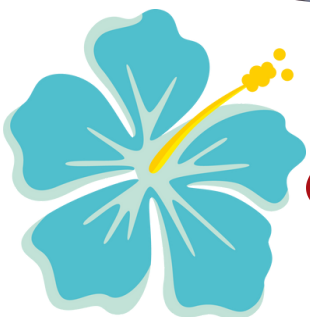
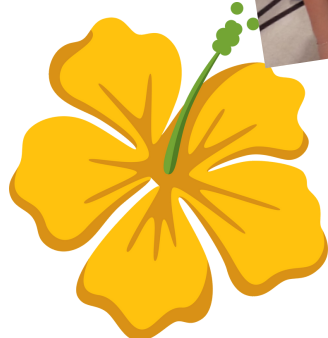
**PFT Monthly Meeting** is on Thursday, May 9 at 7pm via Zoom at <https://us02web.zoom.us/j/850312906>

**Staff Appreciation Week** - Help us raffle off some fun prizes for our staff! See our wish list at: [https://www.amazon.com/hz/wishlist/ls/3HWJYBX5766LE?ref\\_=wl\\_share](https://www.amazon.com/hz/wishlist/ls/3HWJYBX5766LE?ref_=wl_share)

## SAVE THE DATE

4/19/24	Spirit Day- Sports Day
4/22-4/26/24	April Vacation
4/30/24	Second grade field trip to McAuliffe Shepard Discovery Center
5/15/24	Third grade field trip to Seacoast Science Center
5/16/24	First grade field trip to Squam Lake Science Center

# Little Miss Luau



# Wall of Heroes

Our school needs your help in creating a Wall of Heroes at Maple Avenue. If you have family members that you would like to have recognized, please fill out this form and send in a photo for our display. The photo can be a photograph (that will be returned), or a printed image of a photograph. Once the wall is done, we will be taking pictures of it for our virtual version of the wall that will be shared with families through our weekly newsletter and school website.

Name of family member: \_\_\_\_\_

Military Branch: \_\_\_\_\_ Years served: \_\_\_\_\_

Relationship to student: \_\_\_\_\_

\_\_\_\_\_ Yes, you may display our family member digitally

Name of Student: \_\_\_\_\_

Teacher: \_\_\_\_\_

Please attach a hard copy photograph or print out to this form and send back to your child's teacher no later than May 7<sup>th</sup>. If you have any questions, please reach out to Ms. Pruneau at [lauren.pruneau@sau19.org](mailto:lauren.pruneau@sau19.org)

# CHUCK E. CHEESE® FUNdraising

Turning Fun into Funds™



**CHUCK E. CHEESE  
DONATES  
20%  
ON THE SALE**

generated from this event  
to your child's school.

Friends and family members are  
encouraged to help support this event.

**Mention your school when ordering!  
Bring this flyer to Chuck E. Cheese.**

## EVENT INFORMATION

LOCATION: **CHUCK E. CHEESE®**

TIME: 11 am to 9 pm

SCHOOL: Maple Avenue

EVENT DATE: Friday, April 19

EVENT ADDRESS:

1525 South Willow Street

Manchester, NH

To find out more, check out **chuckecheese.com**

**120 PLAY  
POINTS  
FOR \$30**

FR Panel #8166

**CHUCK E.  
CHEESE®**

EXPIRES 12/31/24

Limit one per check. Valid with coupon and only on night of Fundraising Event.  
Only at participating locations. Play card or band activation not included.  
Dine-in only. © 2023 CEC Ent. Conc. LP. All rights reserved.

**\$29<sup>99</sup>**

**1 Large (1 Topping) Pizza  
4 Drinks**

EXPIRES 12/31/24

Limit one per check. Valid with coupon and only on night of Fundraising  
Event. Only at participating locations. Dine-in only.  
© 2023 CEC Ent. Conc. LP. All rights reserved.

FR Panel #5996

**CHUCK E.  
CHEESE®**

**DOWNLOAD THE  
NEW APP  
GET 500 FREE  
E-TICKETS!**



EXPIRES 12/31/24

One time offer. Valid with first time registration.  
See [chuckecheese.com](http://chuckecheese.com) for more details.  
© 2023 CEC Entertainment Concepts, LP. All rights reserved.

Sales include all food and merchandise purchased at the registers. Delivery & Carryout Orders placed directly at [ChuckE Cheese.com](http://ChuckE Cheese.com) now also apply towards your fundraiser. You must add the item "School or Organization Fundraiser" to your cart before check-out and order from the location noted at right.

©2023 CEC Entertainment Concepts, L.P. All rights reserved.

# MAES SPRING SPIRITWEAR

*Deadline to order is Sunday, April 21 at Midnight*



<https://www.browngraphix.com/maple-ave-spring-spiritwear.html>

Maple Avenue PFT Presents

# BOYS NIGHT OUT

*Join us with an adult quest for*

**FISHER CATS**

**VS**

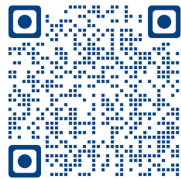
**HARRISBURG  
SENATORS**

**FRIDAY MAY 10TH  
DELTA DENTAL STADIUM  
1 LINE DR, MANCHESTER, NH  
6:35 GAME START**

*Lineup Includes:*

**TEACHER APPRECIATION NIGHT  
SPECIAL VIDEO SHOUTOUT  
FIREWORKS  
MARGARITAVILLE THEME**

*FOR MORE INFORMATION AND TO PURCHASE TICKETS*



**[HTTPS://FEVOENTERPRISE.COM/EVENT/MAPLEAVE2](https://fevoenterprise.com/event/mapleave2)**



**STAFF APPRECIATION WEEK**

**DONATIONS NEEDED**





**REGISTER HERE**



*Fall*

**2024**

**Registration**



**EARLY BIRD**

\$100 W/CAMP\* - SHOES AND BLOOMERS INCLUDED

\$185- SHOES AND BLOOMERS INCLUDED

**Register by 5/15/24**

**Registered after 5/15/24**

\$140 W/CAMP\* - SHOES AND BLOOMERS INCLUDED

\$225- SHOES AND BLOOMERS INCLUDED

- Tiny Mites- 5-7
- D8 - 7-8
- D10 - 9-10
- D12 - 11-12
- D14 - 13-14
- D16 - 15-16

\*w/camp=UCA overnight camp payment \$285 or commuter \$220



**You're  
Invited!**



**AGOGGE**

**WRESTLING CLUB**

**FREE**

# Introduction to Wrestling Class

for brand new wrestlers aged 4 to 18

Monday, April 22nd 5-6pm

or

Wednesday, April 24th 5-6pm

**Register Today**

**[www.agogewrestlingclub.com](http://www.agogewrestlingclub.com)**

